

Intex

GHOST™

Operation Manual:

操作手冊:頁



CE CB



ESV Approval V07462

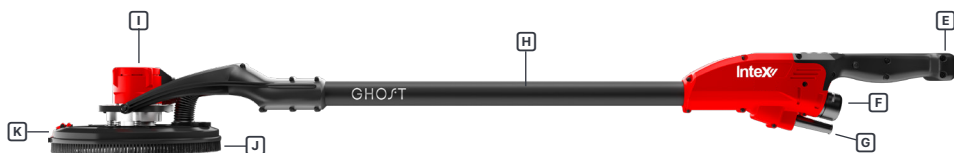
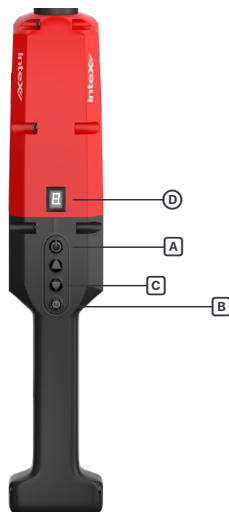


N17310

警告！：在不正确的设置下使用或存放会导致驱动轴损坏，从而导致保修失效。

WARNING!: Using or storing in the incorrect setting, will cause damage to the drive shaft & therefore void warranty.

- A. Power Button
- B. Motor On/Off Button
- C. Speed Selector Buttons
- D. Indicator Screen
- E. Main Handle
- F. Vacuum Swivel Mount
- G. Power Supply Cord
- H. Shaft
- I. Motor
- J. Brush Skirt (rotatable)
- K. Half-Moon Door



Intex GHOST Drywall Sander

Code	AGHOST
Voltage	110-120V or 220-240V ~ 50-60Hz
Power Input	430W
No-Load-Speed	1000 - 1600 min ⁻¹
Sanding Head	Ø 8.5" (215mm)
Sanding Disc	Ø 9" (225mm)
Unit Weight	6.17lbs (2.8kg)
Unit Dimensions	56 x 10 x 6" (1430 x 254 x 157mm)

AGHOST CONTENTS

- GHOST™ Drywall POWER Sander
- H/D Vacuum Hose - 14' (4.3m)
- Velcro Adapter Pad
- L-Hex Key
- Sniper Carry Bag
- Operation Manual

SAFETY INSTRUCTIONS:

⚠️ WARNING! *Read all safety warnings and instructions. Failure to follow the warnings and instruction may result in electric shock, fire and or serious injury.*

Save all warnings and instructions for future reference.

The term power tool in the warnings refers to your mains-operated (corded) power tool or battery-operated (cordless) power tool.

1. Work Area Safety

- a Keep work area clean and well lit. Cluttered and dark areas invite accidents.
- b Do not operate power tools in explosive atmospheres, such as in the presence of power tools create sparks which may ignite the dust or fumes.
- c Keep children and bystanders away while operating a power tool. Distractions can cause you to lose control.
- d Never leave the electric power tool unattended. Only leave the machine when the tool in use has come to a complete standstill.

2. Electrical Safety

- a Power tool plugs must match the outlet. Never modify the plug in any way. Do not outlets will reduce risk of electric shock.
- b Avoid body contact with earthed or grounded surfaces such as pipes, radiators, ranges and refrigerators. There is an increased risk of electric shock if your body is earthed or grounded.
- c Do not expose power tools to rain or wet conditions. Water entering a power tool will increase the risk of electric shock.
- d Do not abuse the cord. Never use the cord for carrying, pulling or unplugging the power tool. Keep cord away from heat, oil, sharp edge or moving parts. Damaged or entangled cords increase the risk of electric shock.
- e When operating a power tool outdoors, use an extension cord suitable for outdoor use. Use of a cord suitable for outdoor use reduces the risk of electric shock.
- f If operating a power tool in a damp location is unavoidable, use a residual current device (RCD) protected supply. Use of an RCD reduces the risk of electric shock.

3. Personal Safety

- a Stay alert, watch what you are doing and use common sense when operating a power tool. Alcohol or medication: A moment of inattention while operating power tools may result in serious personal injury.
- b Use personal protective equipment. Always wear eye protection. Protective equipment such as dust mask, non-skid safety shoes, hard hat, or hearing protection used for appropriate conditions will reduce personal injuries.
- c Prevent unintentional starting. Ensure the switch is in the Off position before connecting to power source and /or battery pack, picking up or carrying the tool. Carrying power tools with your finger on the switch on invites accidents.
- d Remove any adjusting key or wrench before turning the power tool on. A wrench or a key left attached to a rotating part of the power tool may result in personal injury.
- e Do not overreach. Keep proper footing and balance at all times. This enables better control of the power tool in unexpected situations.
- f Dress properly. Do not wear loose clothing or jewellery. Keep your hair, clothing and gloves away from moving parts. Loose clothes, jewellery or long hair can be caught in moving parts.
- g If devices are provided for the connection of dust extraction and collection facilities, ensure these are connected and properly used. Use of these devices can reduce dust-related hazards.
- h Do not let familiarity gained from frequent use of tools allow you to become complacent and ignore, tool safety principles. A careless action can cause severe injury within a fraction of a second.

4. Power Tool Use & Care

- a Do not force the power tool. Use the correct power tool for your application.
The correct power tool will do the job better and safer at the rate for which it was designed.
- b Do not use the power tool if the power does not turn it on or off. Any power tool that cannot be controlled with the switch is dangerous and must be repaired.
- c Disconnect the plug from the power source and/or the battery pack from the power tool before making any adjustments, changing accessories, or storing power tools.
Such preventive safety measures reduce the risk of starting the power tool accidentally.
- d Store idle power tools out of the reach of children and do not allow persons unfamiliar with the power tool or these instructions to operate the power tool. Power tools are dangerous in the hands of untrained users.
- e Maintain power tools. Check for misalignment or binding of moving parts, breakage of parts and any other condition that may effect the power tool's operation. If damaged, have the power tool repaired before use. Many accidents are caused by poorly maintained power tools.
- f Keep cutting tools sharp and clean. Properly maintained cutting tools with sharp cutting edges are less likely to bind and are easier to control.
- g Use the power tool, accessories and tool bits etc. In accordance with these instructions, taking into account the working conditions and the work to be performed. Use of the power tool's for operations different from those intended could result in a hazardous situation.
- h Keep handles dry, clean and free of oil and grease. Slippery handles do not allow for safe handling and control of the tool in unexpected situations. Power tools that have the switch on invites accidents.

5. Service

- a Have your power tool serviced by a qualified repair person using only identical replacement parts.
This will ensure that the safety of the power tool is maintained.
- b Only use original parts for repair and maintenance. The use of incompatible accessories or spare parts can result in electric shocks or other injuries.

Symbols used in this manual



WARNING - To reduce the risk of injury, user must read instruction manual. Use these operating instructions to familiarize yourself with the product, the proper use and the safety instructions.
Keep these operating instructions in a safe place for future uses.



For safety reasons, children and young people under the age of 16, as well as people not familiar with these operating instructions, may not use this product. Persons with reduced physical or mental abilities may use the product only if they are supervised or instructed by a responsible person.

The following symbols are used in this manual:



Type and source of the danger: Failure to observe this danger notice may cause physical injury or death.



Type and source of the danger: This danger notice warns of damage to the appliance, the environment or other property.



Note: This symbol signifies information that may help you reach a better understanding of the process involved.



Always wear eye protection.



Always wear a dust mask.



Wear safety approved hard hat.



Do not dispose of electric tools, accessories and packaging together with household waste material.



Class II Tool.

V Volts.

A Amperes.

Hz Hertz.

W Watt.

~ Alternating current.

n Rated Speed.

min⁻¹ Revolutions or reciprocating per min.

⚠️ WARNING! *Read all safety warnings and instructions. Failure to follow the warnings and instruction may result in electric shock, fire and or serious injury.*

Save all warnings and instructions for future reference.

The term power tool in the warnings refers to your mains-operated (corded) power tool or battery-operated (cordless) power tool.

- This power tool is intended to function as a sander. Read all safety warnings, instructions, illustrations and specifications provided with this power tool. Failure to follow all instructions listed below may result in electric shock, fire and/or serious injury.
- Operations such as grinding, wire brushing, or for polishing and cut-off are not recommended to be performed with this power tool. Operations for which the power tool was not designed may create a hazard and cause personal injury.
- Do not use accessories which are not specifically designed and recommended by the tool manufacturer. Just because the accessory can be attached to your power tool, it does not assure safe operation.
- The rated speed of the accessory must be at least equal to the maximum speed marked on the power tool. Accessories running faster than their rated speed can break and fly apart.
- The outside diameter and the thickness of your accessory must be within the capacity rating of your power tool. Incorrectly sized accessories cannot be adequately guarded or controlled.
- Threaded mounting of accessories must match the grinder spindle thread. For accessories mounted by flanges, the arbour hole of the accessory must fit the locating diameter of the flange. Accessories that do not match the mounting hardware of the power tool will run out of balance, vibrate excessively and may cause loss of control.
- Do not use a damaged accessory. Before each use inspect the accessory such as abrasive wheels for chips and cracks, backing pad for cracks, tear or excess wear, wire brush for loose or cracked wires. If power tool or accessory is dropped, inspect for damage or install an undamaged accessory. After inspecting and installing an accessory, position yourself and bystanders away from the plane of the rotating accessory and run the power tool at maximum no-load speed for one minute. Damaged accessories will normally break apart during this test time.
- Wear personal protective equipment. Depending on application, use face shield, safety goggles or safety glasses. As appropriate, wear dust mask, hearing protectors, gloves and shop apron capable of stopping small abrasive or work-piece fragments. The eye protection must be capable of stopping flying debris generated by various operations. The dust mask or respirator must be capable of filtering particles generated by your operation. Prolonged exposure to high intensity noise may cause hearing loss.
- Keep bystanders a safe distance away from work area. Anyone entering the work area must wear personal protective equipment. Fragments of work-piece or of a broken accessory may fly away and cause injury beyond immediate area of operation.
- Hold power tool by insulated gripping surfaces only, when performing an operation where the cutting accessory may contact hidden wiring or its own cord. Cutting accessory contacting a "live" wire may make exposed metal parts of the power tool "live" and shock the operator.
- Position the cord clear of the spinning accessory. If you lose control, the cord may be cut or snagged and your hand or arm may be pulled into the spinning accessory.
- Never lay the power tool down until the accessory has come to a complete stop. The spinning accessory may grab the surface and pull the power tool out of your control.
- Do not run the power tool while carrying it at your side. Accidental contact with the spinning accessory could snag your clothing, pulling the accessory into your body.
- Regularly clean the power tool's air vents. The motor's fan will draw the dust inside the housing and excessive accumulation of powdered metal may cause electrical hazards.
- Do not operate the power tool near flammable materials. Sparks could ignite these materials.
- Do not use accessories that require liquid coolants. Using water or other liquid coolants may result in electrocution or shock.

Kickback & Related Warnings

Kickback is a sudden reaction to a pinched or snagged rotating wheel, backing pad, brush or any other accessory. Pinching or snagging causes rapid stalling of the rotating accessory which in turn causes the uncontrolled power tool to be forced in the direction opposite of the accessory's rotation at the point of the binding. For example, if an abrasive wheel is snagged or pinched by the work-piece, the edge of the wheel that is entering into the pinch point can dig into the surface of the material causing the wheel to climb out or kick out. The wheel may either jump toward or away from the operator, depending on direction of the wheel's movement at the point of pinching. Abrasive wheels may also break under these conditions. Kickback is the result of power tool misuse and/or incorrect operating procedures or conditions and can be avoided by taking proper precautions as given below.

- Maintain a firm grip on the power tool and position your body and arm to allow you to resist kickback forces. Always use auxiliary handle, if provided, for maximum control over kickback or torque reaction during start-up. The operator can control torque reactions or kickback forces, if proper precautions are taken.
- Never place your hand near the rotating accessory. Accessory may kickback over your hand.
- Do not position your body in the area where power tool will move if kickback occurs. Kickback will propel the tool in direction opposite to the wheel's movement at the point of snagging.
- Use special care when working corners, sharp edges etc. Avoid bouncing and snagging the accessory. Corners, sharp edges or bouncing have a tendency to snag the rotating accessory and cause loss of control or kickback.
- Do not attach a saw chain woodcarving blade or toothed saw blade. Such blades create frequent kickback and loss of control.

SPECIAL SAFETY INSTRUCTIONS FOR SANDING:

Do not use excessively oversized sanding disc paper. Follow manufacturers recommendations, when selecting sanding paper. Larger sanding paper extending beyond the sanding pad presents a laceration hazard and may cause snagging, tearing of the disc or kickback.

Functional Description

This Electric Drywall Sander is specially designed for the most efficient sanding of drywall or plaster walls and ceilings for both new construction and renovation work. It is designed to work in conjunction with a vacuum cleaner for minimum dust and best sanding results. The pivoting sanding head allows excellent results with minimum time and effort.

Electrical Connection

The network voltage must be within the voltage range indicated on the tool name plate. Under no circumstances should the tool be used when the power supply cable is damaged. A damaged cable must be replaced immediately by an authorized Customer Service Center. Do not try to repair the damaged cable yourself. The use of damaged power cables can lead to an electric shock.

Extension Cable

If an extension cable is required, it must have a sufficient cross-section so as to prevent an excessive drop in voltage or overheating. An excessive drop in voltage reduces the output and can lead to failure of the motor.

Unpacking

Carefully remove the tool and all loose items from the shipping container. Retain all packing materials until after you have inspected and satisfactorily operated the machine.

To Install SuperPad

1. Unplug the machine.
2. Peel away the worn out sandpaper disc, leaving the sponge backing pad in place.
3. Carefully center the new sandpaper disc and press into place. It will be held securely by the hook and loop backing.

NOTE: The sponge pad has 2 different hook profile types. The black side is finer hook, the white side is coarser hook. Choose the side which adheres best to your sandpaper.

To Replace Cushioned Interface Pad

The sponge pad must be perfectly flat to get good sanding results. If it is deformed or damaged it will cause very uneven sanding. Always replace it when damaged. It is hook and loop on both sides, so to Replace it, peel it away from the hook and loop on the Sanding Plate Base and, taking great care to keep it perfectly centered, affix a new one.

CAUTION: Ensure that the holes in the Sponge Pad are perfectly aligned with the slots in the Sanding Plate Base. Improper alignment will lead to excessive vibration.

CAUTION: Only use original parts Sponge Pads for replacement. Outside-sourced sponge pads will not function properly with this tool.

To Replace Brush Bristles

The brush bristles on the edge of the Sanding Plate Cover serve two purposes, they keep the sanding disc properly aligned with the work surface without gouging and they also help the efficiency of the dust collection by the vacuum cleaner. These brush bristles will wear with continued use.

The Sanding Plate Cover should be replaced when the bristles are too worn to ensure effective dust collection and stabilization of the sanding head.



Vacuum Cleaner

Ensure that you have a bag installed in your vacuum cleaner which is approved and rated for drywall dust.

WARNING: Failure to use an approved dust bag in your vacuum will increase the level of airborne dust in the work area. Prolonged exposure to such dust may cause respiratory harm.

Starting & Stopping Tool

Make sure that the power circuit voltage is the same as that shown on the specification plate of the machine before connecting the tool to the power circuit.

To switch on:

While holding with the left hand on the shaft and the right hand on the main handle, first press the Power Button to energize the tool, then press the Motor On/Off button to start the tool. Anticipate and be ready for the start up torque when the machine first starts.

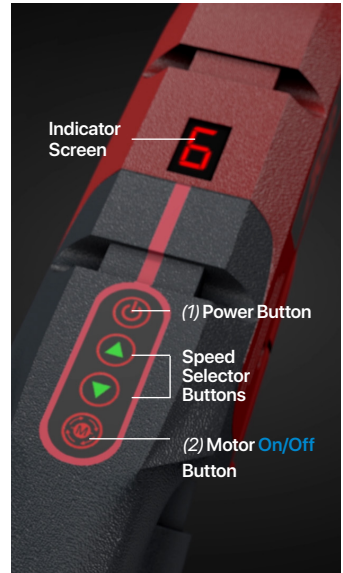
To switch off:

Press the Power Button. After the machine has been switched off, the sanding disc will still rotate for a time. Take care that parts of your body do not come into contact with the disc and do not set the machine down while it is still rotating!

Adjusting Rotation Speed

The speed of the machine is variable to suit different tasks. It can be adjusted from 780/min up to 1250/min in steps of 80/min by pressing the "Up" and "Down" Speed Selector Buttons. Press "Up" to increase the speed and "Down" to decrease the speed. The selected setting will appear on the indicator screen.

Generally, you should use higher speeds for fast stock removal and lower speeds for more precise control. Note: For fine finish sanding, use lower speed and fine grit sandpaper discs.



How to operate Hour Tracker

Job Hours Counter (resettable)

1. Press *Power Button* to turn ON machine
2. Press *Power Button* again and hold it down while pressing *Speed Selector Up Button* then pressing *Speed Selector Down Button* (i.e. hold Power + ↑, ↓)
3. While continuing to hold the *Power Button* down, the display will flash "H" followed by the digits in succession indicating the number of hours, followed by a long pause and then repeat.

Job Hours Counter Resetting

1. Press *Power Button* to turn ON machine
2. Press *Power Button* again and hold down while pressing *Up* then *Down* 3 times in succession (i.e. hold Power + ↑↓, ↑↓, ↑↓)
3. Continue to hold the *Power Button* down and the screen will flash 3 times. The counter is now reset.

Total Hours Counter (not resettable)

1. Press *Power Button* to turn ON machine
2. Press *Power Button* again and hold down while pressing *Up, Up* then *Down, Down* (i.e. hold Power + ↑↓, ↑↓)
3. While continuing to hold the *Power Button* down, the display will flash "H" (with the dot in the lower right corner of the screen illuminated), followed by the digits in succession indicating the number of hours, followed by a long pause and then repeat.

Half-Moon Door

The sanding plate cover is equipped with an open half-moon door which will allow the operator to sand right up to the edge or into a corner. The edge of the brush skirt is also rotatable to position the opening to any desired angle.

To open, first turn off and de-energize the machine, then press the door straight down until it clicks and it will then be free to flip up under its spring tension. Closing is the opposite of opening.

Dust collection will not be ideal while the half-moon door is opened, so the door should be closed immediately when not needed.



How To Use Tool

Effective control of this powerful sander requires two-handed operation for maximum safety and control. The proper hold is to keep one hand on the main handle and the other hand on the column. It is vitally important to keep stable footing at all times, especially when standing on scaffolding or stilts.

Sanding Operations

1. Once the machine and vacuum cleaner are set up and all safety measures and equipment are in place, begin by turning on the vacuum cleaner and then the machine. *(If you are using a vacuum cleaner with integrated switching, then simply turn the machine on.)*
2. Begin sanding and carefully contact the work surface as lightly as possible—just enough to keep the sanding head flat against the surface.
3. The joints in the sanding head allow the sanding disc to follow the contours of the work surface.
4. The best technique is to use overlapping sweeps and keep the head in constant motion. Never stop too long in any one place or there will be swirl marks. With experience it will be very easy to create excellent results.

CAUTION: Always ensure that the work surface is fully dried before sanding. A wet or semi-wet surface will overload the motor, leading to damage to the tool.

NOTE: Ensure that the sandpaper you are using is suited to the task. Overly coarse grit paper may remove material too quickly to control. While overly fine grit paper may clog too often and not shape down the surface.

CAUTION: Take care to avoid pointed projections and nails, etc. This will wipe out the sandpaper and probably damage the sponge pad as well.

Maintenance

As often as is necessary, blow compressed air through the motor while running at no load to clean out accumulated dust.

Keep Tool Clean

Periodically blow out all air passages with dry compressed air. All plastic parts should be cleaned with a soft damp cloth. NEVER use solvents to clean plastic parts. They could possibly dissolve or otherwise damage the material.

Wear safety glasses while using compressed air.

Clean the vacuum swivel connector as too much dust will keep it from turning freely.

If the replacement of the power supply cord is necessary, this has to be done by Intex or an authorised service agent in order to avoid a safety hazard.

WARNING: All repairs must be entrusted to an authorised service agent. Incorrectly performed repairs could lead to injury or death.

Overload & Thermal Protection

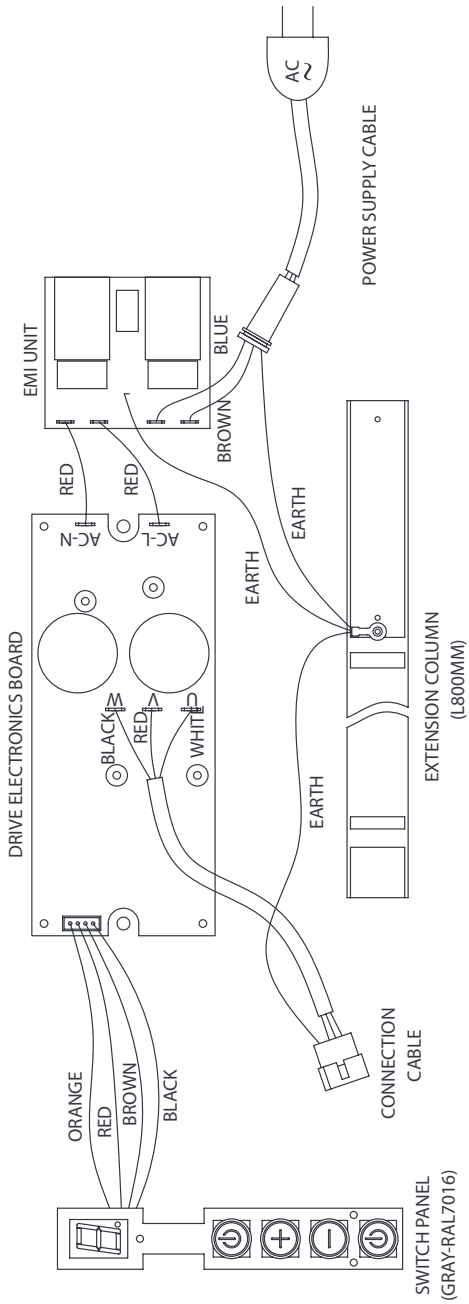
This tool will indicate that the maximum recommended load has been reached by slowing its rotation speed. If the operator continues to push the machine harder, it will stop. When the tool overheats, it will also automatically stop. See "Error Codes" below for more information.

CAUTION: Whenever the tool overloads or overheats, always run at no load for a few minutes to allow it to cool before continuing work.

Error Codes

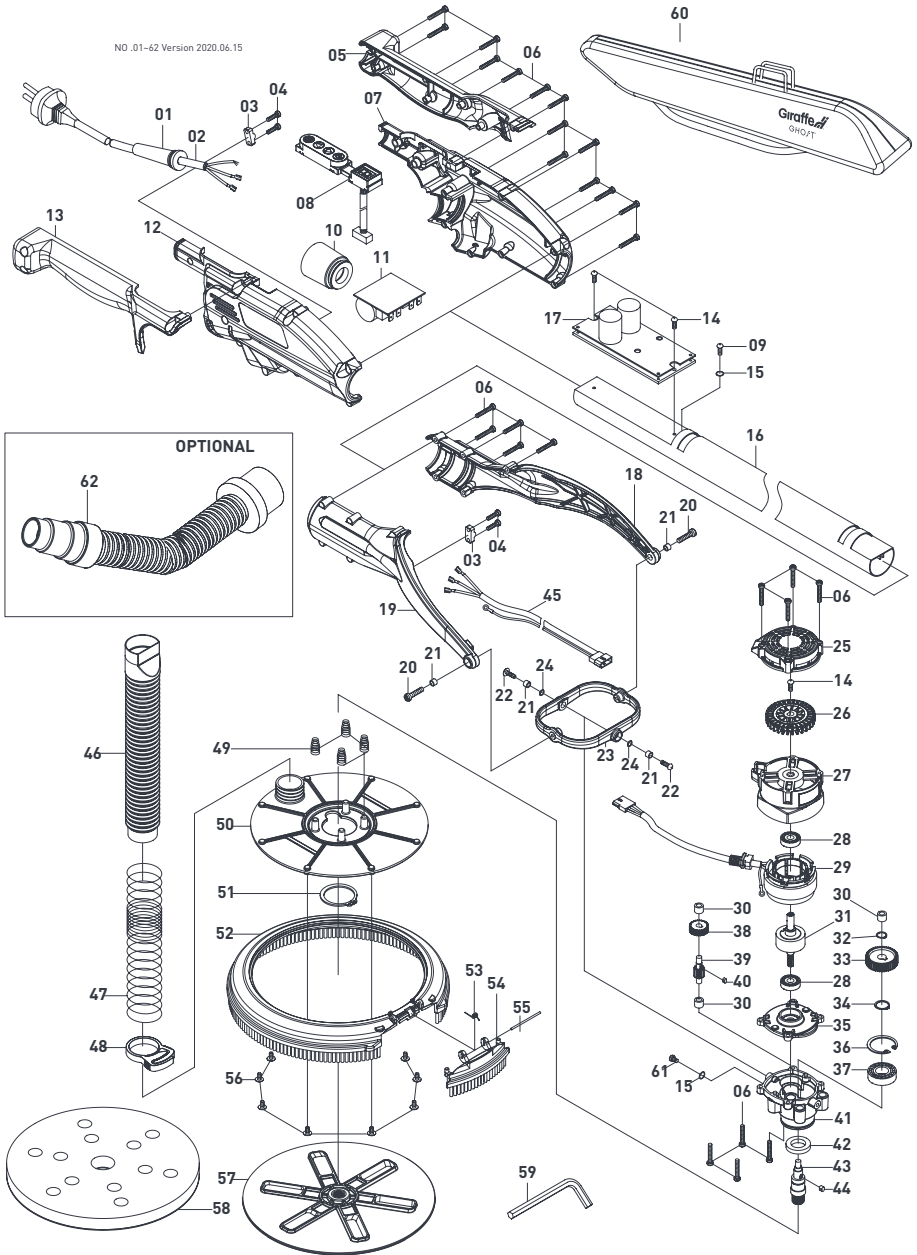
E - 1	Current overload	Press the Motor Switch once to clear the error, then press the Motor Switch once more to restart the tool.
E - 2	Overheat (<i>controller >80°C</i>)	When the temperature drops to below 60°C, Press the Motor Switch once to clear the error, then press the Motor Switch once more to restart the tool.
E - 3	Low voltage: 110V-120V input below 80V or 220V-240V input below 180V	When voltage returns to normal, Press the Motor Switch once to clear the error, then press the Motor Switch once more to restart the tool.
E - 4	High voltage: 110V-120V input higher than 130V or 220V-240V input higher than 260V	When voltage returns to normal, Press the Motor Switch once to clear the error, then press the Motor Switch once more to restart the tool.
E - 2 - 5	Motor blocked	Ensure that the motor is free to turn, then press the Motor Switch once to clear the error, then press the Motor Switch once more to restart the tool.
E - 2 - 6	Motor cannot restart after 4 tries	Press the Motor Switch once to clear the error, then press the Motor Switch once more to restart the tool. If problem persists, bring to Authorized Service Centre for checking.
E - 9 - 1	Loss of communication between the switch panel unit and the drive electronics board during operation.	Drive electronics board automatically clears the signal: Press the Motor Switch once to clear the error, then press the Motor Switch once more to restart the tool. If problem persists, bring to Authorized Service Centre for checking.

NOTE: The indicator screen can also display elapsed hours. See dealer for details.



Exploded View

NO. 01-62 Version 2020.06.15



Parts List

NO.	Parts Name	QTY
1	CORD ARMOR	1
2	POWER SUPPLY CABLE (VDE-0.75x3Cx4.2M-H05RNF)	1
3	CABLE CLIP	2
4	PANHEAD TAPPING SCREW (M4x14)	4
5	HANDLE HALF-LEFT	1
6	PANHEAD TAPPING SCREW (M4x25)	27
7	MAIN HOUSING-LEFT	1
8	SWITCH PANEL	1
9	PANHEAD MACHINE SCREW (M4x10xP0.7)	1
10	BAYONET HOSE CONNECTOR	1
11	EMI UNIT	1
12	MAIN HOUSING-RIGHT	1
13	HANDLE HALF-RIGHT	1
14	TRUSS HEAD MACHINE SCREW (M4x10xP0.7)	3
15	EXTERNAL STAR WASHER (M4)	2
16	EXTENSION SHAFT (L800MM)	1
17	DRIVE ELECTRONICS BOARD	1
18	SUPPORT ARM-LEFT	1
19	SUPPORT ARM-RIGHT	1
20	PANHEAD TAPPING SCREW(M5x16)	2
21	BUSHING (Ø5xØ7x7)	4
22	TRUSS HEAD MACHINE SCREW (M5x12xP0.8)	2
23	PIVOT BRACKET	1
24	O-RING (Ø7x2)	2
25	MOTOR END CASTING	1
26	FAN	1
27	MOTOR HOUSING	1
28	BALL BEARING (608)	2
29	STATOR (60x34.8x15)	1

30	BUSHING (Ø6xØ10x8)	3
31	ROTOR	1
32	EXTERNAL CIRCLIP (S10)	1
33	OUTPUT GEAR (M0.8x42T)/(M0.8x39T)	1
34	EXTERNAL CIRCLIP (S-15)	1
35	GEAR PLATE	1
36	INTERNAL CIRCLIP (R-32)	1
37	BALL BEARING (6002)	1
38	INPUT GEAR (M0.7x30T)	1
39	INPUT SHAFT (M0.8x14T)/ (M0.8x17T)	1
40	PARALLEL KEY (3x3x6)	1
41	GEAR HOUSING	1
42	OIL SEAL (Ø17xØ28x5)	1
43	SPINDLE	1
44	PARALLEL KEY (4x4x6)	1
45	CONNECTION CABLE	1
46	VACCUM HOSE	1
47	SPRING (Ø1xØ30xØ32x278Lx38T)	1
48	PLASTIC CLIP	1
49	SPRING (Ø0.7x6Tx20L)	4
50	SANDING COVER BASE	1
51	EXTERNAL CIRCLIP (S-38)	1
52	SANDING PLATE COVER	1
53	TORSION SPRING	1
54	HALF-MOON DOOR	1
55	PIVOT PIN (Ø2x48)	1
56	TRUSS HEAD TAPPING SCREW (M4x6)	8
57	SANDING PLATE BASE	1
58	VELCRO SPONGE PAD (9')	1
59	HEX KEY (M6)	1
60	CARRY BAG	1
61	TRUSS HEAD MACHINE SCREW (M4x6xP0.7)	1
62	VACUUM EXTENSION HOSE (4M)	1

Thank you for choosing an Intex product!

To register your warranty, complete our online form @ intexinternational.com or scan QR below.



Warranty Statement:

Intex Group International Pty Ltd (*Intex*) guarantees that all products manufactured by and or for Intex shall be free from defects under normal use. Your registered warranty means that the product you have purchased is covered against such defects, in accordance with any specific warranty period and conditions stated in the manual enclosed with the product.

Warranty may invalidate due to:

- Expiry of the warranty period.
- Incorrect and unsuited product use (*i.e. not in accordance with Intex operation manual*).
- Unfulfilled specified product service or maintenance requirements.
- Careless and unsuited product handling (*i.e. damage caused by impacts, falls and climatic influences*).
- Wear and tear to normal wearing parts (*e.g. brushes, bearings, sleeves, consumable accessories etc*).
- Battery Pack faults or defects after 700 charging cycles (*even if identified inside the warranty period*).
- Product changes or modifications made from the new and original state without prior written approval from Intex.
- Service and or repairs performed by non-Authorised Intex Service Agents and or personnel.
- Non-original and genuine Intex spare parts, accessories and or consumable materials used.
- The product not being manufactured by and or for Intex.
- The product not being purchased from Intex or an Authorised Intex Reseller.
- Intex and or the Authorised Intex Reseller not having been paid in full for the product.

To find a local Authorised Service Agent, view the warranty claim process or read our terms and conditions visit intexinternational.com



intexinternational.com

Intex

Power Tools



Useit^{and}  starmix[★]
Super Pad_{SM} Star Mix_{SM}

Starmix® & Useit® are registered Trademarks of Intex International. The information contained in this brochure was correct at the time of printing. E&OE